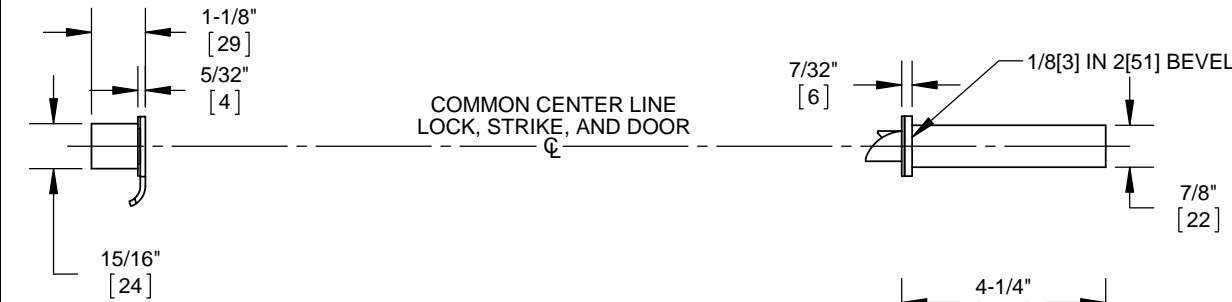
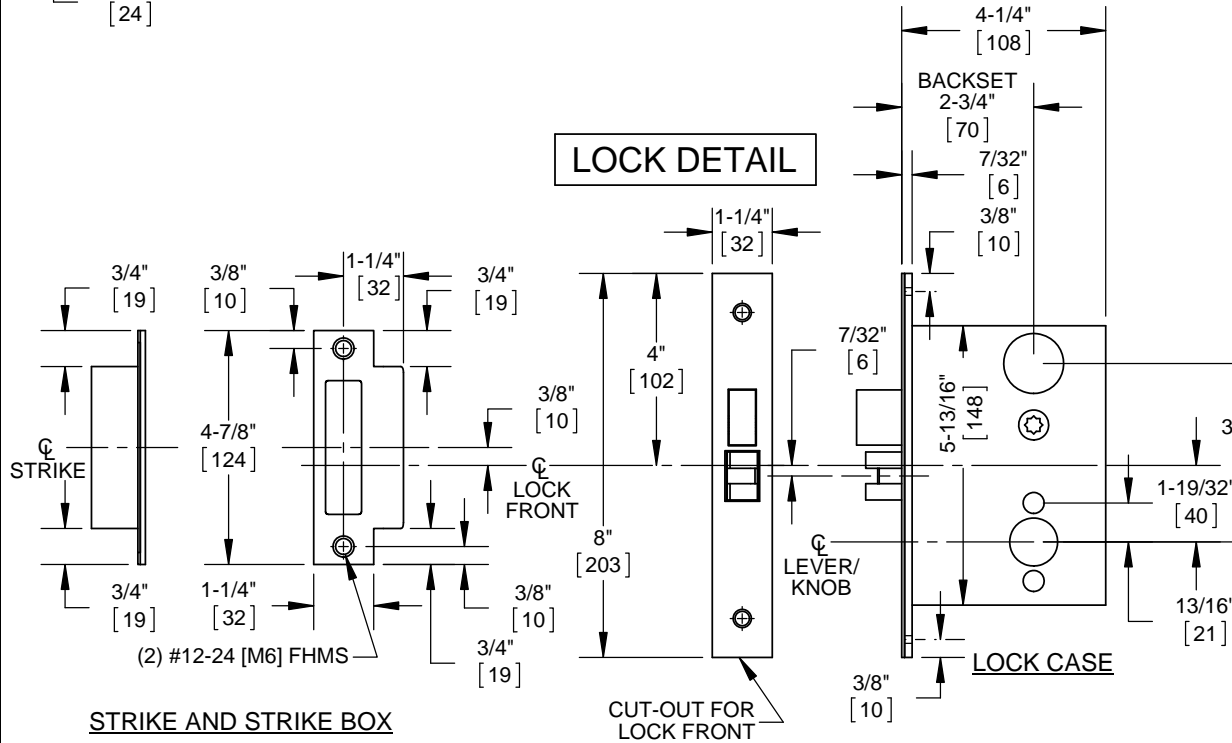




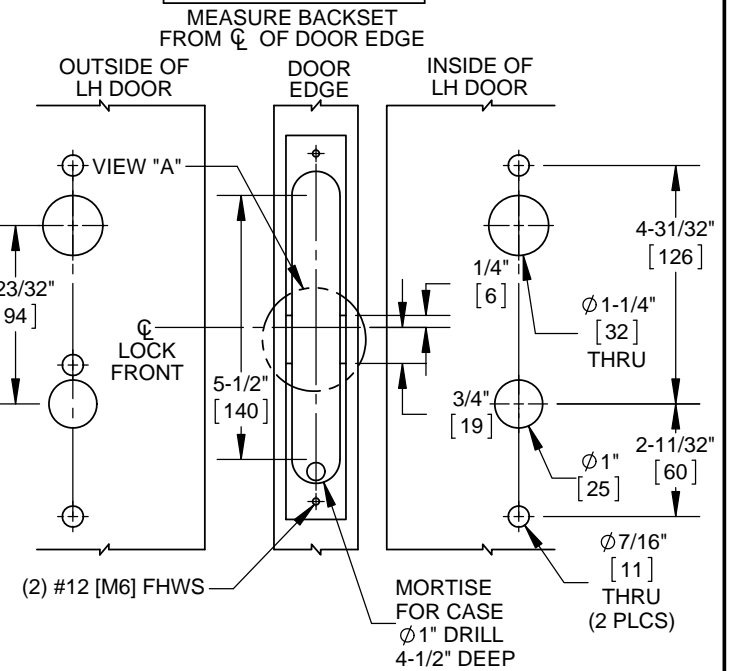
VIEW "A"



LOCK DETAIL



DOOR DETAIL



NOTES:

- 1. DIMENSIONS ARE IN INCHES/[MM].
- 2. DO NOT SCALE DRAWING.
- 3. FOR #12 FHWS, USE 9/64" (.140") DRILL.
- 4. FOR #12-24 FHMS, USE #16 (.177") DRILL & TAP.

DOOR CUT-OUTS AS INDICATED UNDER DOOR DETAIL.
FRAME FOR STRIKE SHOWN UNDER LOCK DETAIL.

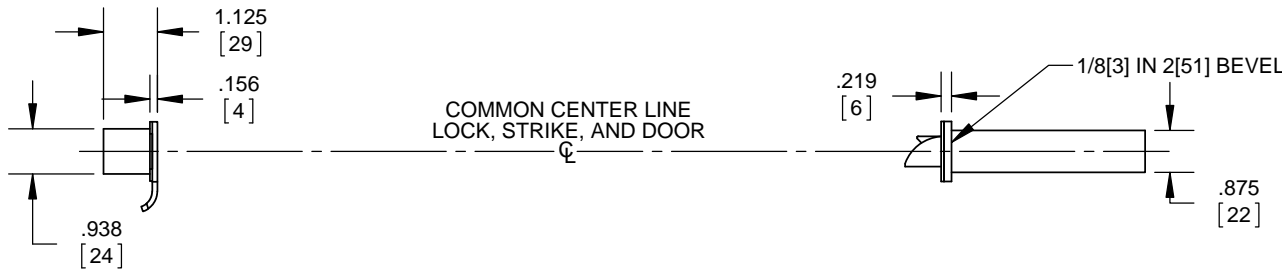
WOOD DOORS - H Escutcheon Trim

M9957, M9958, M9966, M9967, M9968, M9974

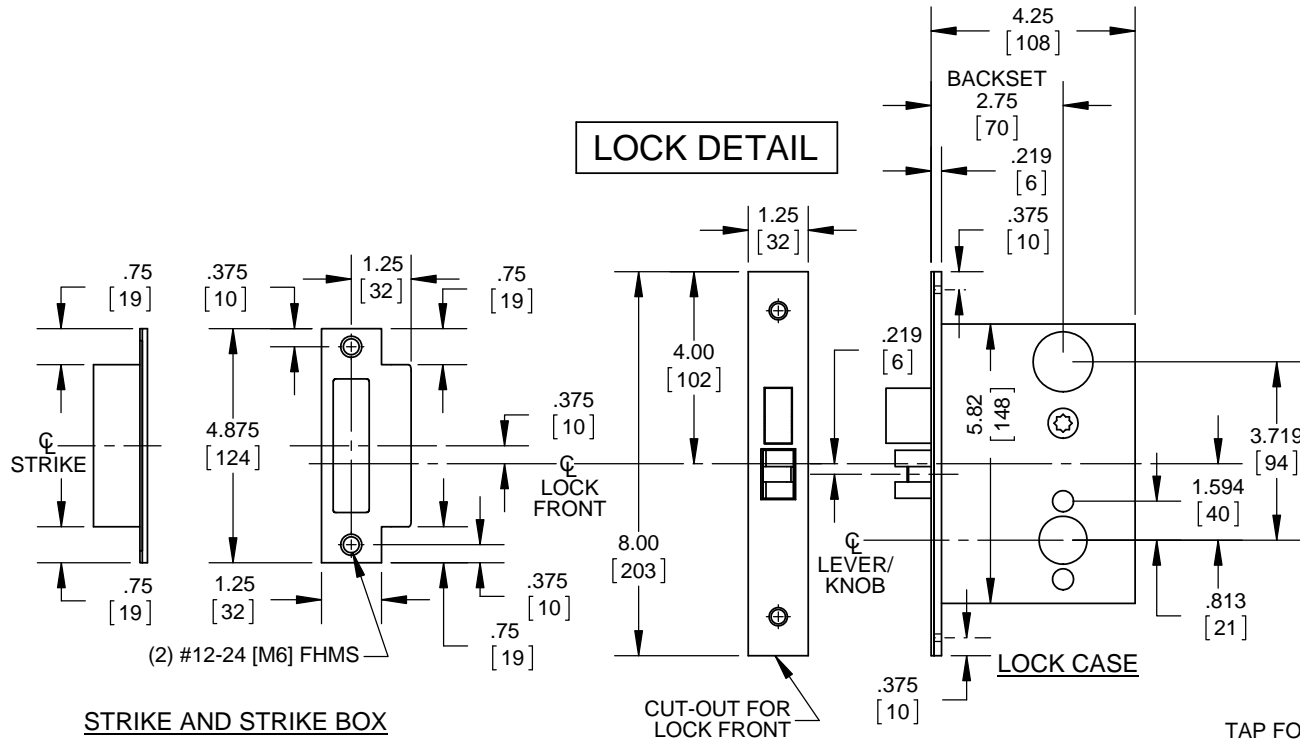
DORMA USA, Inc.
Reamstown, PA 17567

Toll-Free: (800) 523-8483
Facsimile: (800) 274-9724

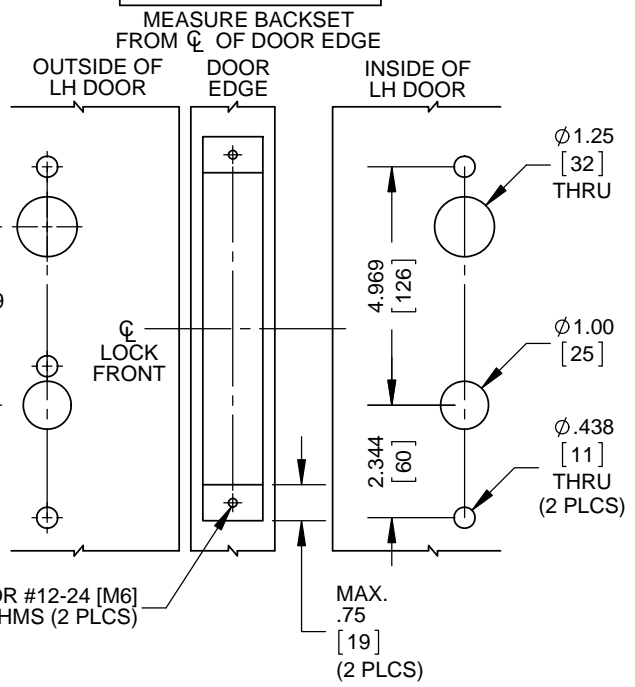
Always consult DORMA's web site for latest template at www.dorma.com.



LOCK DETAIL



DOOR DETAIL



- NOTES:
1. DIMENSIONS ARE IN INCHES/[MM].
 2. DO NOT SCALE DRAWING.
 3. FOR #12 FHWS, USE 9/64" (.140") DRILL.
 4. FOR #12-24 FHMS, USE #16 (.177") DRILL & TAP.

DOOR CUT-OUTS AS INDICATED UNDER DOOR DETAIL.
FRAME FOR STRIKE SHOWN UNDER LOCK DETAIL.

STEEL DOORS - H Escutcheon Trim

M9957, M9958, M9966, M9967, M9968, M9974

DORMA USA, Inc.
Reamstown, PA 17567

Toll-Free: (800) 523-8483
Facsimile: (800) 274-9724

Always consult DORMA's web site for latest
template at www.dorma.com.